

# GN 162-NI | Connecting clamp bases

Stainless steel



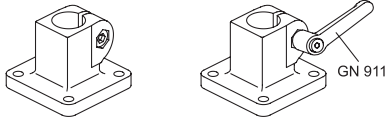
## MATERIAL

Stainless steel, matte finish.  
AISI 304 stainless steel screw and nut.

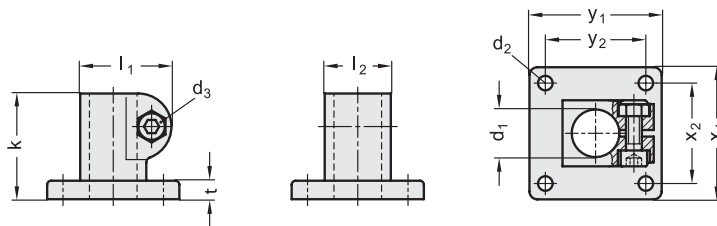
## FEATURES AND APPLICATIONS

The assembly hole of GN 162-NI connecting clamps allows an excellent match with tubes GN 990 (see page 1954).

The clamping screws d3 may be replaced by clamping kits GN 911 (see page 1958).



Conversion Table	
1 mm = 0.039 inch	
d1	
mm	inch
12	0.46
14	0.55
15	0.59
16	0.63
18	0.71
20	0.79



Code	Description	d1	d2	d3	k	l1	l2	t	x1	x2	y1	y2	d3 Clamping kit	⚖️
GN.48033	GN 162-B12-2-NI	12	5.5	M6	40	34.5	25	7	50	38	50	38	GN 911-M6-22	238
GN.48053	GN 162-B14-2-NI	14	5.5	M6	40	34.5	25	7	50	38	50	38	GN 911-M6-22	227
GN.48073	GN 162-B15-2-NI	15	5.5	M6	40	34.5	25	7	50	38	50	38	GN 911-M6-22	220
GN.48093	GN 162-B16-2-NI	16	5.5	M6	40	34.5	25	7	50	38	50	38	GN 911-M6-22	213
GN.48113	GN 162-B18-2-NI	18	5.5	M6	40	34.5	25	7	50	38	50	38	GN 911-M6-22	207
GN.48123	GN 162-B20-2-NI	20	5.5	M6	40	34.5	25	7	50	38	50	38	GN 911-M6-22	200